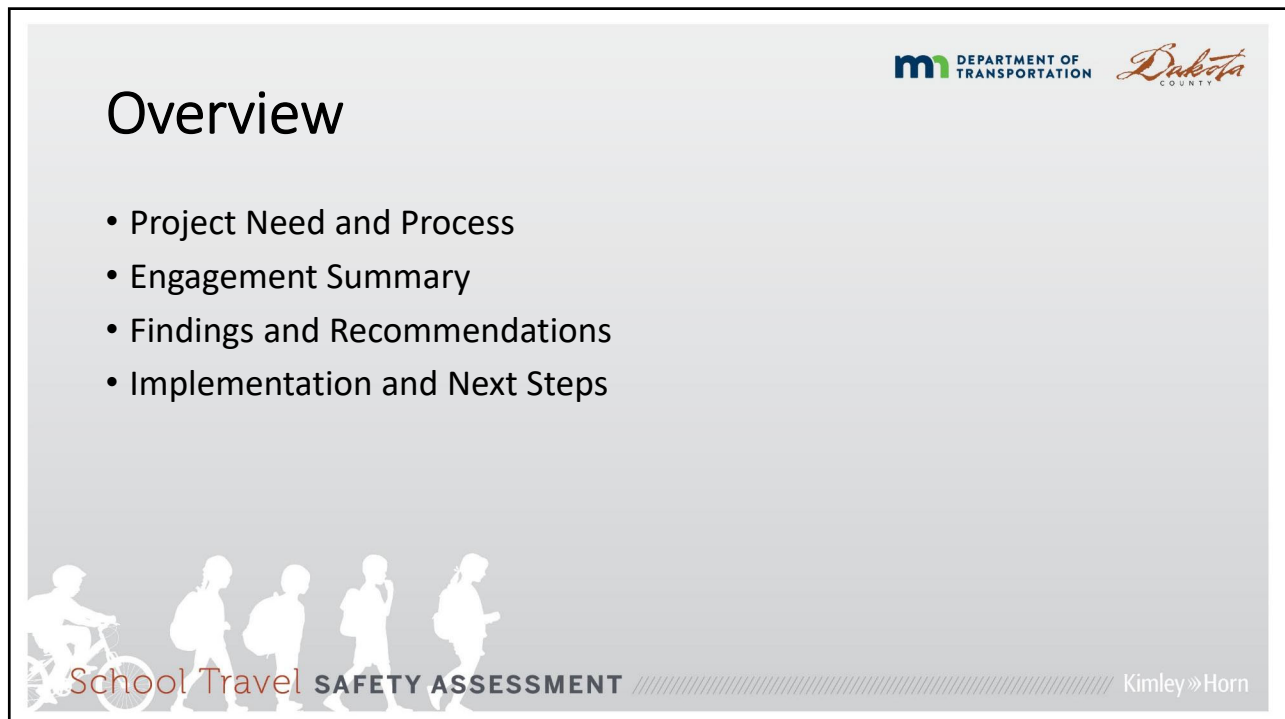





1




2




## Reasons for Conducting the Assessment

- County and state roads have higher traffic volumes and higher speeds
- School zones are a priority for safety
  - Younger pedestrians and bicyclists
  - New drivers
- Develop consistent approach to review and recommendations




School Travel SAFETY ASSESSMENT // Kimley»Horn

3



## What is the Project?

- Assessment of 48 schools next to county and state roads
- Research best practices for safety treatments at schools
- Gather public feedback
- Evaluate school sites
- Develop recommendations



School Travel SAFETY ASSESSMENT // Kimley»Horn

4

## 6 Es of Safe Routes To School (SRTS)

- Equity
- Education
- Encouragement
- Enforcement
- Engineering
- Evaluation

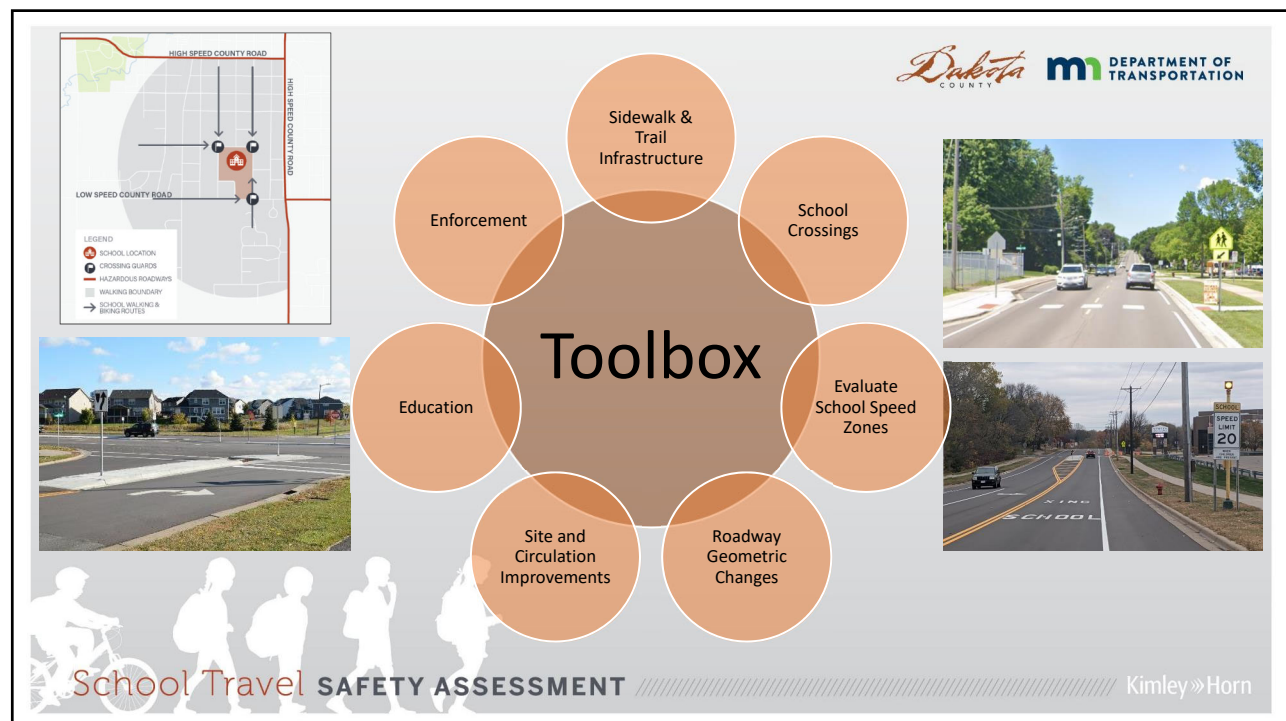


Source: MnDOT SRTS 101

School Travel SAFETY ASSESSMENT

Kimley»Horn

5



6

# Engagement

- Virtual Public Engagement
  - Open house 1: June-August, 2020
    - Identify walking and biking routes and safety concerns
  - Open house 2: November-December, 2020
    - Seek feedback on draft safety improvements



## School Safety Assessment

Dakota County is partnering with MnDOT to proactively address safety for students traveling to and from school. There are about 50 schools in Dakota County next to county and state roads.

The assessments will focus on safety issues near the schools and recommendations for improvements. The assessments will identify solutions in engineering, education and enforcement.

### Virtual open house

The virtual open house will be available through at least Monday, Aug. 31. The time may be extended based on feedback.



Video also available in Spanish.

[Give feedback on an interactive map \(available in English and Spanish\)](#)

[Complete a project survey](#)

[Complete a project survey \(Spanish version\)](#)



Kimley»Horn

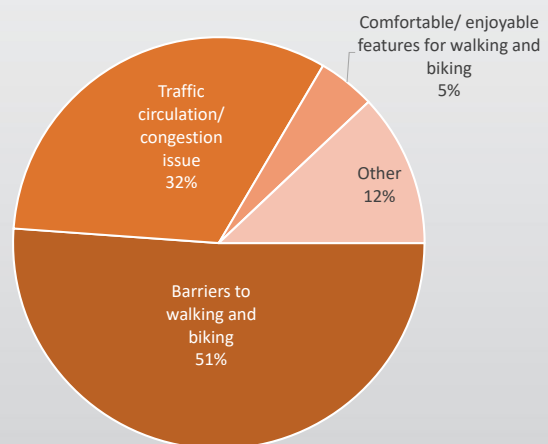
7

# Engagement

- Virtual Engagement #1 Feedback Themes
  - Safety of intersections and crossings
  - Speed of traffic along county or state road
  - Traffic congestion at schools
  - Driver behavior



## Summary of Interactive Map Pins





Kimley»Horn

8



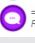








# Engagement

- Virtual Engagement #2
  - Goal: Gather public feedback on draft improvements



**LEGEND:**

-  = Sidewalk and Trail Infrastructure  
Infraestructura de aceras y senderos
-  = Roadway Geometric Improvements  
Mejoras geométricas de la carretera
-  = Enforcement  
Aplicación
-  = Response to Public Comments Open House #1  
Respuesta a los comentarios públicos
-  = School Crossings  
Cruces escolares
-  = Site and Circulation Improvements  
Mejoras en el lugar y la circulación
-  = School and District Considerations  
Consideraciones de la escuela y el distrito
-  = No Recommendations  
Sin recomendaciones
-  = Evaluate School Speed Zone  
Evaluar zona de velocidad alrededor de la escuela
-  = Education  
Educación
-  = City Considerations  
Consideraciones de la ciudad

**Description: Sidewalk/Trail Infrastructure**

**Initial comment:** Sidewalk and Trail Infrastructure: County construct sidewalk on the east side of CR 63 (Delaware Avenue) to connect to a school crossing of CR 63 (Delaware Avenue). School and District construct on-site sidewalk to connect from the school building to CR 63 (Delaware Avenue) and the proposed school crossing of CR 63 (Delaware Avenue). Infraestructura de aceras y senderos. El condado construye una acera en el lado este de CR 63 (Delaware Avenue) para conectarla a un cruce escolar de CR 63 (Delaware Avenue). La escuela y el distrito construyen una acera en el sitio para establecer una conexión desde el edificio escolar hasta CR 63 (Delaware Avenue) y el cruce escolar propuesto de CR 63 (Delaware Avenue).

Please login first to agree/disagree.

**Add a comment**

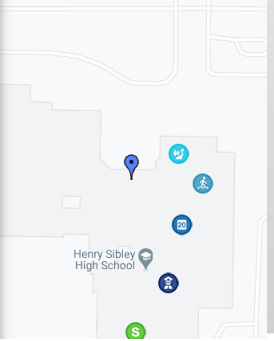
Please login first to add a comment

Extend trail infrastructure along Delaware Ave north of Marie and south of Hwy 62. Students regularly walk/bike on the shoulder of Delaware Ave to/from high school, which is incredibly unsafe and a tragedy waiting to happen.  
Dec 14, 2020

there should be separate facilities for bicycles and pedestrians on-site. Given the high demand for ped/bike facilities at particular times of the day, separate facilities will ensure safe and efficient movement for all users.  
Dec 5, 2020

The on-site sidewalk infrastructure should also extend west to connect with existing bike/ped trail that runs north/south adjacent to warrior drive.  
Dec 5, 2020

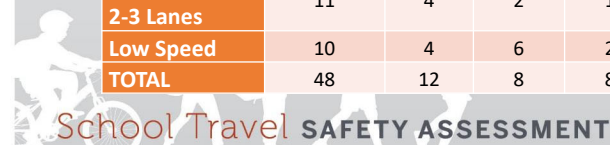
I Agree. The scope of the recommendation for Sidewalk and Trail Infrastructure should extend south along CR63, south of SH 62 to Mendota Heights Road. This would allow for students within 2 miles of the school who are not eligible for bus transportation to safely walk to school.



9

## Findings and Recommendations Summary

School Evaluation Group	Number of Schools	Number of Schools with Recommended Treatment								No Treatments Recommended on County/State Road
		Sidewalk and Trail Infrastructure	School Crossings		Evaluate School Speed Zone	Roadway Geometric Changes	Site and Circulation Improvements	Education	Enforcement	
			Major	Minor						
High Speed, 4+ Lanes	27	4	0	5	3	3	1	13	3	9
High Speed, 2-3 Lanes	11	4	2	1	3	1	1	3	1	4
Low Speed	10	4	6	2	6	0	1	2	4	0
TOTAL	48	12	8	8	12	4	3	18	8	13



Kimley»Horn

10



## Findings and Recommendations

### Sample of summary from Appendix B



School	Sidewalk and Trail Infrastructure	School Crossings		Evaluate School Speed Zone	Roadway Geometric Changes	Site and Circulation Improvements	Education	Enforcement	School and District Considerations	City Considerations
		Major	Minor							
Henry Sibley High School	✓	✓		✓				✓	✓	
Falcon Ridge Middle School	✓		✓		✓		✓		✓	
St. Croix Lutheran Academy	*	✓						✓	✓	
Simley High School/ Inver Grove Heights Middle School		✓		✓				✓	✓	

\* Indicates community need

Excerpt from final report

School Travel SAFETY ASSESSMENT

Kimley»Horn

11

## Individual School Evaluations (Appendix C)



### SCHOOL NAME

### MAP OF EXISTING CONDITIONS NEAR SCHOOL

### BACKGROUND INFORMATION AND DATA

- No existing school crossings
- The City of West St. Paul has applied for grant funding to construct trail on CR 73 (Dakota Avenue) at School Street between CR 4 (Robert Avenue) and CR 8 (Hawthorne Avenue). Status of the funding application will be known by January 2023 and, if funded, the trail would be a 2024 construction project.

Kimley»Horn C-002

### PUBLIC INPUT

**Interactive Map**  
 No feedback was provided on the interactive map as part of the first virtual engagement in summer 2020.

**Public Comment Survey**  
 No survey responses were received for St. Croix Lutheran Academy.

**VIRTUAL ENGAGEMENT #2**  
**Interactive Map**  
 The draft recommendations and the comments provided are summarized below.

### RECOMMENDATIONS

(Between Avenue and CR 8 (Hawthorne Avenue), The trail along CR 73 (Dakota Avenue) is a community need rather than a school road.)

- **School Crossings**
  - o County construct a school crossing at CR 73 (Dakota Avenue)/Moneland Avenue. The following crossing enhancements should be implemented:
    - High visibility (conventional) crosswalk markings
    - Advanced stop bars for the crossing
    - Curb extensions to shorten the crossing and make pedestrians more visible
    - There is an existing **gap** at the intersection and the illumination levels should be confirmed as part of the design of the school crossing.
- **School Considerations**
  - o School develop a school walking and biking route plan for St. Croix Lutheran Academy.
  - o School provide walking and biking safety education.
  - o School develop student students to only cross TR 3 (Robert Street) at traffic signals.

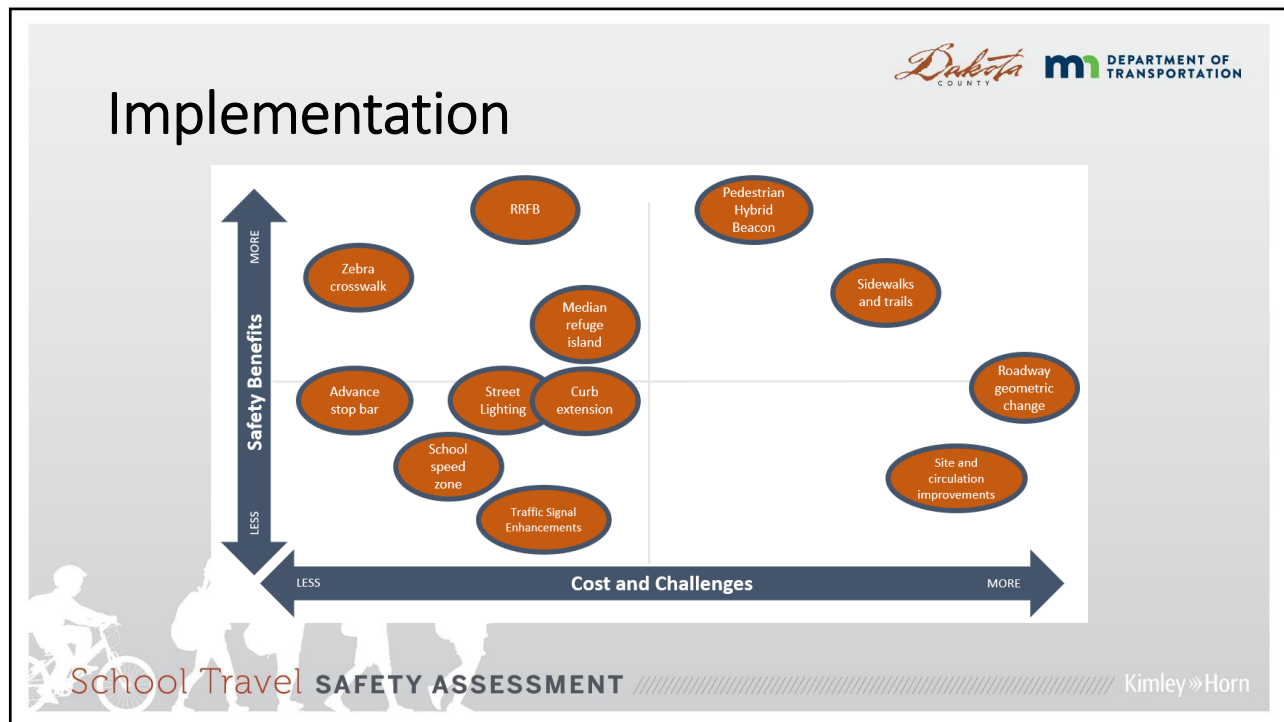
Kimley»Horn C-002

Excerpt from final report

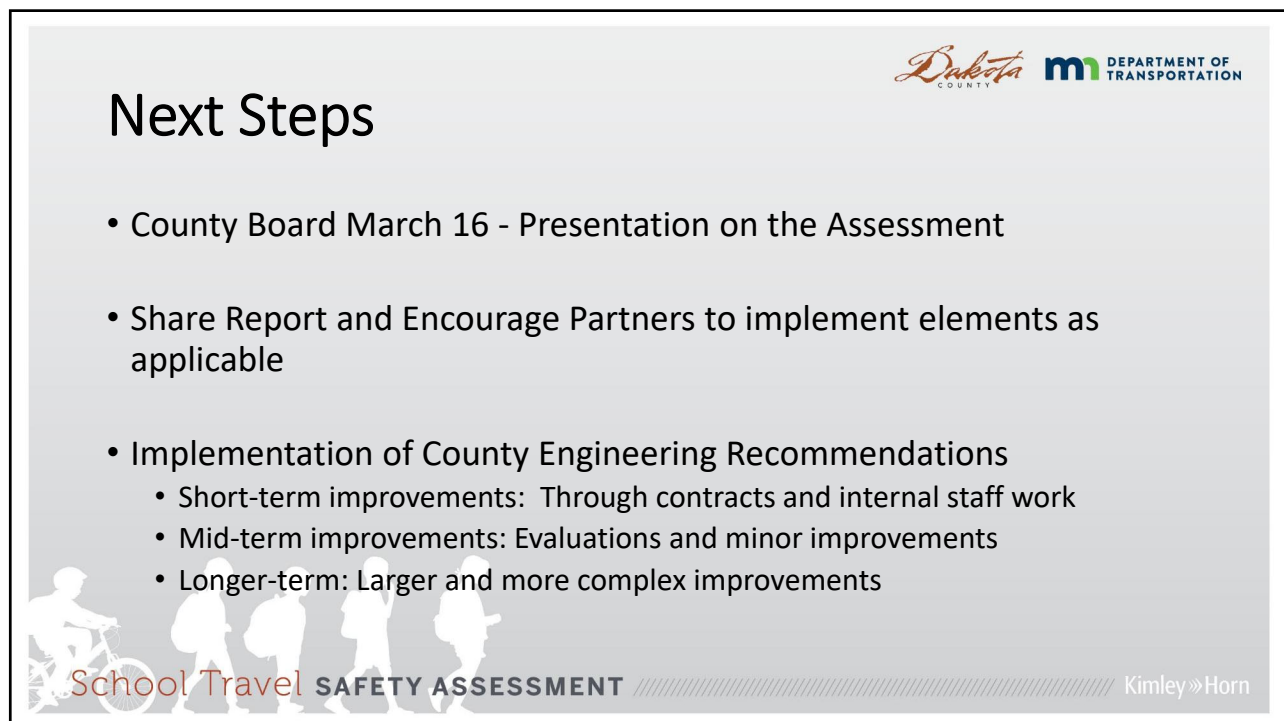
School Travel SAFETY ASSESSMENT

Kimley»Horn

12



13



14



15